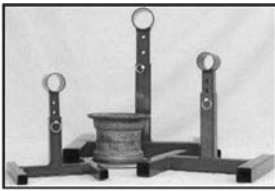


# SCALES - ROTATORS - TIRE BEAD BREAKERS



## LANDING GEAR SAFETY STAND

The "Landing Gear Safety Stand" is a must! Anyone that has ever seen a plane slip off a jack knows! The stand slips on over the axle when ever the wheel is removed. Put the nut back on and the plane can't slip off the stand. It adjusts for height with a quick release pin. The

wide, stable "H" base is made from heavy gauge square steel tubing for strength, safety and durability. The unique stand is finished in an attractive, bright red powder coat finish. LGSS-2, has a 12" x 12" base with adjustable axle height of 10"-15", and LGSS-3 has an 18" x 18" base with adjustable height of 14"-21.5".

- 9" Stand ..... P/N 12-02015 .....
- 12" Stand ..... P/N 12-00255 .....
- 18" Stand ..... P/N 12-00256 .....

## STRUT SERVICE TOOL



Service Strut in your Sunday Suit.

- Clean way to service struts.
- Strut valve core is NOT removed.
- Hose fitting releases pressure & fluid into the bottle.
- Raise & lower strut a few times, then apply the charge.

P/N 12-16792 .....

## PRO SERIES STRUT SERVICE TOOL



The Pro Series Strut Service Tool has all the great attributes of the original Strut Service Tool, with the addition of a dual tank and dual check valve design. The longer service hose makes it easy to attach. Strut pressure, fluid and foam is captured in one tank. Clean, foam-free fluid is drawn back into the strut from the second tank. Simplicity, cleanliness and less waste make this tool a must-have. The strut valve core is not removed. P/N 12-00677 .....

## AT508K CANNON CONNECTOR PLIERS



The AT508K features serrated jaws for improved gripping and a slip joint for improved leverage. Ideal for all common cannon connector applications. P/N AT508K .....

## PRECISION AIRCRAFT SCALES FOR ACCURATE WEIGHT & BALANCE



Checks aircraft weight and balance after modifications or fitting of new accessories. Flight safety is improved by periodic weighing to verify weight and balance is within limits. Simply roll the aircraft up the ramps onto the scales or jack the wheels and slide the pads under tires. A single high performance strain gauge load cell is

in each pad. Temperature compensation prevents zero shift or sensitivity changes. Weighing pads, indicator and cables are color coded for easy match up. Include one 3 channel indicator, three colored cables, one 110V battery charger cable, three ramps, and six tire stops. Also includes a case.

Part No.	Capacity	Price
12-16711	2,500 lbs. per pad	.
12-16715	6,000 lbs. per pad	.
12-16721	10,000 lbs. per pad	.
12-16725	15,000 lbs. per pad	.
OPTIONS		
Part No.	Description	Price
12-16730	Extra cable, colored	.
12-16735	Extra ramps, small, set of 3	.
12-16740	Extra ramps, large, set of 3	.
12-16745	Extra tire stops (chocks)	.
12-16750	220V Battery Charger Cable for overseas	.



## TIRE BEAD BREAKER

Once the tire & wheel have been removed from the airplane, the air is let out of the tire. The "Tire Bead Breaker" is used to break the bead or bond between tire and wheel. The "TBB" let you safely break this bead almost without effort & with-out doing damage to the expensive cast wheels. One broken wheel half can easily cost more than the "Tire Bead Breaker"!

The "Tire Bead Breaker" adjusts to fit tires as small as tailwheel tires and as large as those tires found on large, corporate cabin planes. Can be used on both tube and tubeless tires.

P/N 12-16790 .....



## TIRE BEAD BREAKER

The universal design of this tire bead breaker accommodate tube type and tubeless tires. It is easily adjustable for a wide range of tire sizes up to as large as tires for Twin Beech and Aero Commanders. Features all steel construction. P/N 13-02360 .....

## ACCUGAGE PROFESSIONAL TIRE GAUGE



This very accurate bourdon tube tire gauge offers precision pressure control and a rugged steel case with rubber shock-absorbing cover. It comes complete with a 12" long flexible braided hose, a bleeder valve, and stop hand. It is easy to read the pressure on this 2" gauge with 1" psi markings and 60 lb. range. Excellent for use on aircraft tires as well as cars and trucks.

P/N 13-00437 .....

## TIRE PRESSURE MONITOR SYSTEM



Southern Precision Components Inc. is introducing a Wireless Tire Pressure/Temperature LCD Monitor (TPMS). With the flip of a switch, this battery operated, hand held unit, displays the actual tire pressure and tire temperature.

Small removable electronic valve sensors transmit pressure/temperature to the LCD monitor within 25-50 feet of the aircraft. The sensors can be easily removed when adding air to the tires, and when placing the sensors back on the valve stems, will send the new pressure readings to the LCD monitor.

Pressure can be read as PSI, KPA, BAR, or KG/CM squared. Temperature can be read in Centigrade or Fahrenheit. The monitor also has an alarm setting for high or low pressure. The battery has an average life of two years. P/N 05-04367 .....

## AIR ARM TIRE FILLING ADAPTER



This adapter permits the easy air charging of tires inside of most light aircraft wheel pants. The Air Arm will couple to virtually all air dispensing connectors in the aircraft field. The Air Arm can be ordered with or without the gauge adapter head.

P/N 12-30180 .....

## TEMPIL MARKERS



Marks easily on metal, ceramic, glass, plastic, wood and paper. Markings are fast drying, permanent, weatherproof. Won't rub off, run, fade, chip, peel or blister. The surface can be wet, dry, rough, smooth or oily. Efficient on any horizontal, vertical or inclined surface. Long-lasting

6" ball point tube with non-clogging point.

- Black..... P/N 12-11901.....
- Red ..... P/N 12-11907 .....
- White ..... P/N 12-11908.....
- Yellow ..... P/N 12-11911 .....

## RUGGLES AIRCRAFT SCALES



Ruggles Scales make it easy and affordable for you to compute weight and balance on your own aircraft any time and any place. They are small and easy to transport. With their drive on capability, there is no need to jack up each wheel to slide scales in place. Ruggles Scales

use the principle of a fulcrum and a very long lever. So simple, the only tool you will need is a screwdriver for calibration. Sturdily constructed of cadmium plated steel and precision engineered for accuracy. Complete instructions are included with scales. Not certified. Capacity is 3600 lbs. (1200 lbs. per wheel). Scale can be set to either 2:1 or 4:1 ratio. Tricycle gear set includes 3 arms and 3 scales. Taildragger set includes 2 arms and 3 scales.

- Tricycle gear Ruggles Scales set..... P/N 12-21400.....
- Taildragger Ruggles Scales set ..... P/N 12-21450.....

TO